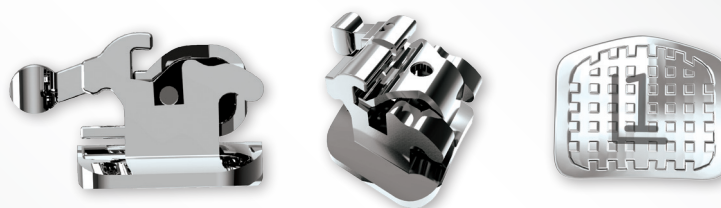
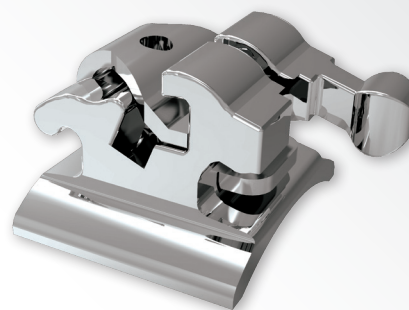


exceptional memory & endurance properties *ensures* treatment without deformation

The all new Endurance™ Self-Ligating Bracket System provides similar features to our traditional twin brackets with an integrated Nickel Titanium clip. The exceptional memory characteristic of Ni-Ti ensures reliable operation without the risk of deformation throughout the entire length of treatment. The flexible clip will provide greater leveling and alignment during the early stages of treatment. Once the archwire is increased the bracket becomes active providing greater rotational control. With greater rotational and full archwire engagement the friction or active part of the bracket will provide greater individual tooth control. The Endurance™ Self-Ligating Bracket System delivers all the performance and control you would expect in a self-ligating appliance.

Endurance™ SELF-LIGATING BRACKET SYSTEM



Interactive Control

The dynamic interaction between the ligating mechanism and the archwire enables the precise degree of control needed for each phase of treatment.

PASSIVE PHASE



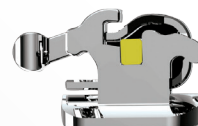
Small, round wires slide freely, minimizing archwire engagement and reducing friction facilitating efficient leveling and alignment.

INTERACTIVE PHASE



Small square or rectangular archwires fill the slot but do not reach the ligating mechanism. This adds control during the working phase for space closure and rotation control and arch form expression.

ACTIVE PHASE



Larger rectangular archwires extend beyond the slot to fully engage the clip, facilitating active control for finishing and detailing.



web: www.dynaflex.com ph: 866-346-5665

051017 © 2017 DynaFlex®, St. Louis, MO 63074. Printed in U.S.A. All rights reserved. It is a violation of copyright law to reproduce all or part of this material, including photography, without the permission of DynaFlex®.