

Seamless Appliance Delivery With **DIGITAL** Technology

“THE DIGITAL BLOCKOUT PROCESS”

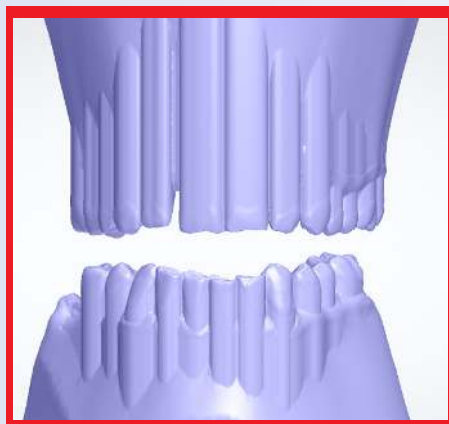
“The appliance
doesn’t fit!”

We’ve all heard it before . . . “my patient’s appliance is too loose or too tight”. This can sometimes be caused by distorted impressions or working models. That being said, usually the culprit in this scenario is the method used to block out the undercuts on the working models. Most manufacturers still rely on a manual process, using a lab technician to “eye ball” the exact amount of block out material required for proper path of insertion and smooth delivery of the appliance at chair side. This older manufacturing method can sometimes result in poor fitting appliances, requiring time-consuming acrylic adjustments or the necessity to return the sleep appliance back to the manufacturer. This can be frustrating for both the patient and dentist (and admittedly, for the lab).

DynaFlex, a United States registered manufacturing facility has recently introduced advancements in digital technology that eliminates the old “eye balling” manual process of blocking out



for undercuts during the fabrication process.



This year, DynaFlex started providing our clients with digital blockout for appliance fabrication. This means the manual guesswork of undercut relief by the lab technician has been removed from the manufacturing process. The precision of the digital blockout technology provides you with a more consistent appliance fit every time. Based on the different materials, DynaFlex sets the software to a specific tolerance level that works best for retention and delivery of each appliance. Depending on preferences, the dentist can now customize this tolerance level to the exact retention amount (more or less) that they prefer with the type of appliance and the type of material (acrylic, comfort fit or Accu-fit). The new digital block out process provides a consistent delivery schedule, saving both chair-time and improving the patient workflow in your practice.

The new digital blockout technology is only one of the digital advancements that DynaFlex has implemented into the custom manufacturing of your sleep devices. DynaFlex can also help you make the most of your digital technology. We accept all .stl files making the entire process easy and accurate from your intraoral scan to final appliance delivery. In addition, your patient’s working models and bite registration are digitally stored forever and a day. Digital storage makes it easy to replace a lost or pet-destroyed appliance. Digital storage makes appliance replacement as simple as a phone call or email to DynaFlex.



ALEX BUDDEMEYER, CDT

If you have additional questions about digital technology and dental sleep appliances please contact me at alex@dynaflex.com.