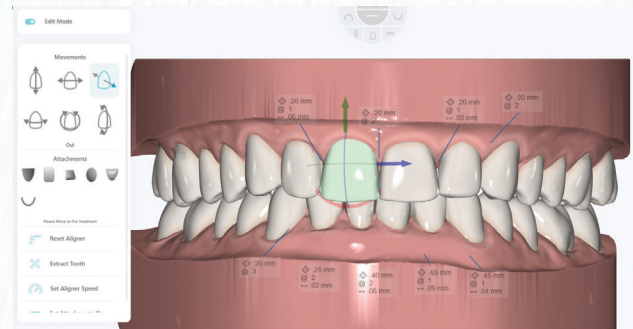


1. TOOTH SELECTION

To make individual tooth adjustments, place mouse pointer over the tooth you wish to adjust and then **right click** to select. The selected tooth should turn green once selected. (See right).

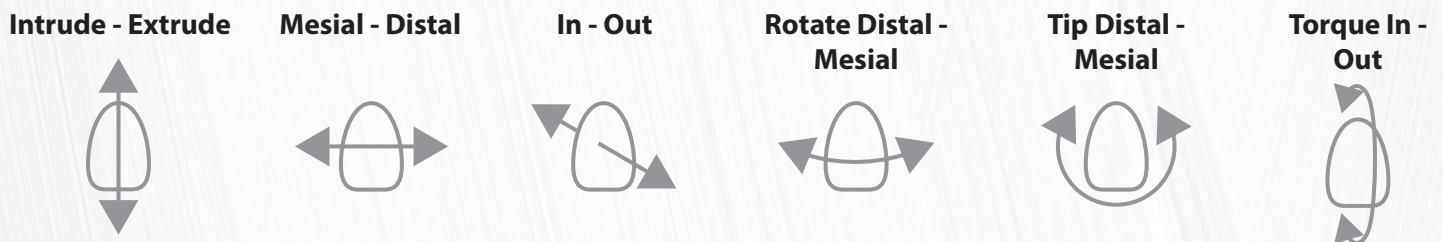


2. TOOTH ADJUSTMENT TOOLS

The software allows you to make minor tooth position changes, and automatically calculate the number of sequences needed for each movement, based on a standard tooth speed of .25 mm per sequence (See below).

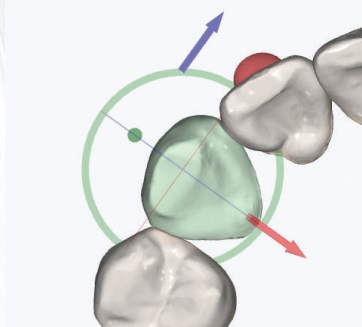


Go to the necessary tooth movement icon and mouse over the grey arrows to display the tooth movement action. Once you determine the correct action, go ahead and **click on the white arrow**.



To modify tooth position using the free navigation tools directly on the teeth. **Right Click** on desired tooth and a coordinate manipulation wheel will display around the tooth.

Note: The manipulation wheel follows the tooth axis for center of rotation and translation as well as the camera angles.



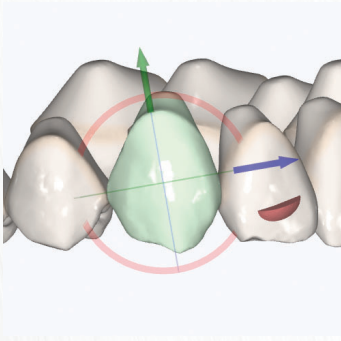
Rotate Mesial / Distal - **Right Click, Hold + drag Green** axis wheel in the direction you want the tooth to be rotated.

Translate Mesial / Distal - **Right Click, Hold + drag Blue** arrow in the direction you want the tooth to be translated.

Translate Lingual / Buccal - **Right Click, Hold + drag Red** arrow in the direction you want the tooth to be translated.



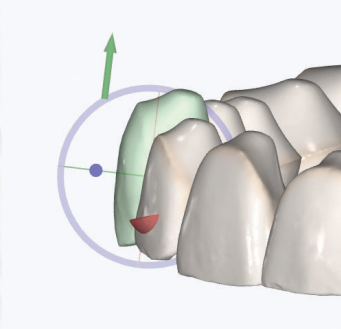
INSTRUCTIONS: ALIGNER SETUP ADJUSTMENTS



Crown Tip Mesial / Distal - **Right Click, Hold + drag Red** axis wheel in the direction you want the tooth to be tipped.

Translate Intrude / Extrude - **Right Click, Hold + drag Green** arrow in the direction you want the tooth to be translated.

Translate Mesial / Distal - **Right Click, Hold + drag Blue** arrow in the direction you want the tooth to be translated.



Torque Lingual / Buccal - **Right Click, Hold + drag Blue** axis wheel in the direction you want the tooth to be torqued.

Translate Intrude / Extrude - **Right Click, Hold + drag Green** arrow in the direction you want the tooth to be translated.

Translate Lingual / Buccal - **Right Click, Hold + drag Red** arrow in the direction you want the tooth to be translated.

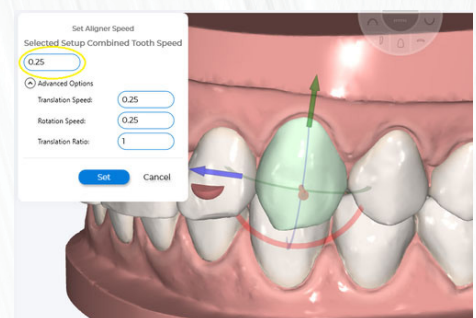
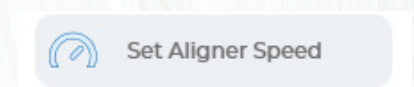
Note: To reset a tooth all the way back to the original pre-treatment position. **Right Click** to select tooth. Then, click the **RESET ALIGNER** option

3. ADVANCED TOOLS (TOOTH SPEED)

Edit Aligner Speed to multiple or individual teeth. **Right Click** on desired tooth to select and click on **SET ALIGNER SPEED** option to open tooth speed editor (*See right*).

Modify overall tooth speed accordingly by entering the amount desired in millimeters. (SmileShare™ default tooth speed is .25mm) Adjusting tooth speed will automatically adjust the velocity of movement per each sequence and may also adjust the number of total sequences (*See right*).

Open **ADVANCED OPTIONS** to adjust speed to a specific movement. Here you have the option to slow down and or speed up translation or rotation movement individually within the overall sequence of movements. Example: When a tooth has both a translation and rotation combined movement, extruding can be slowed down to increase predictability in the movement while maintaining the standard speed for the rotation.



www.ezalign.com

**NEED FURTHER
ASSISTANCE?**

Email: ez@dynaflex.com
Call: 800-489-4020

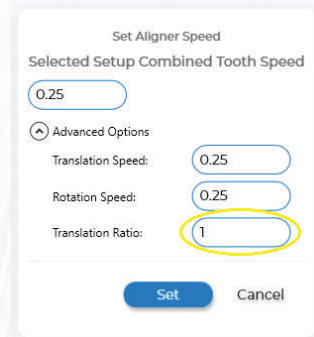


INSTRUCTIONS: ALIGNER SETUP ADJUSTMENTS

4. ADVANCED TOOLS (TRANSLATION RATIO)

Edit translation to rotation ratio (*See right*). Change the ratio of translation from the SmileShare™ standard of 1 to 1 to the desired ratio by entering the ratio in Translation ratio field.

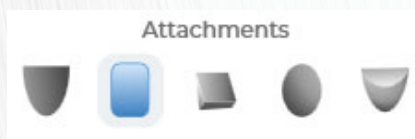
This option is helpful when required to complete a movement type before another. Example: when looking to expand with a translation movement before starting a rotation for a tooth, opening a space to avoid a collision between two teeth.



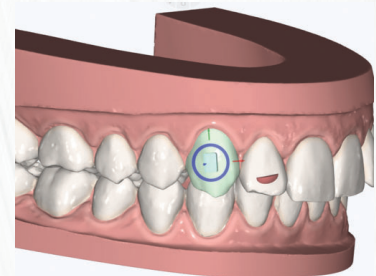
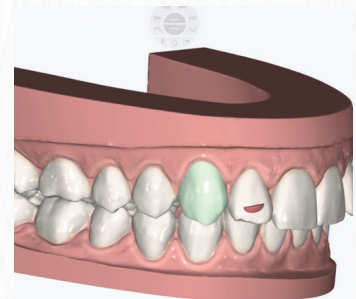
5. ADDING ATTACHMENTS

To add attachments to an individual tooth, move sequence to Pre-Treatment or Zero. Place mouse pointer over tooth you wish to add attachment to, then **Right Click** to select. The selected tooth should turn green once selected.

- Next, **Left click** on attachment image to select desired attachment from the library. Once selected (*See below*).

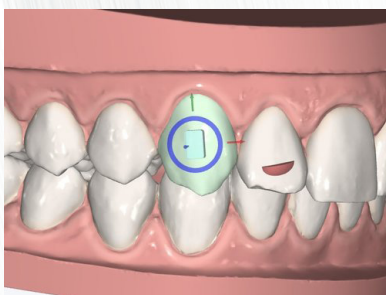


- Go back to the tooth selected and **Right Click** to drop the attachment in desired location (*See to right*).



6. ADJUSTING ATTACHMENTS

To adjust attachment position, right click on attachment to select. The selected attachment should turn green and the attachment manipulation tool will display around the attachment.



Right Click and Hold attachment to drag it around selected tooth surface. Release the right click to set the attachment new position.

Right Click, Hold and drag mouse around **BLUE** wheel to rotate attachment. Release the right click to set new attachment orientation.

Right Click, Hold and drag arrows to modify attachment size in the direction of the arrow.



www.ezalign.com

**NEED FURTHER
ASSISTANCE?**

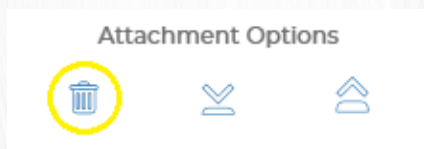
Email: ez@dynaflex.com
Call: 800-489-4020



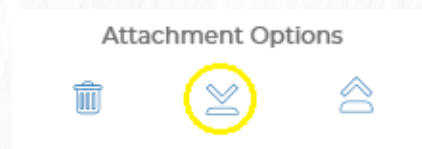
INSTRUCTIONS: ALIGNER SETUP ADJUSTMENTS

Attachment Options

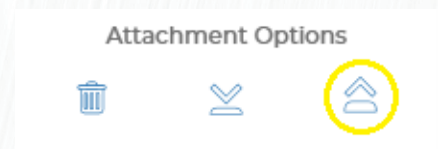
Delete Attachment



Sink Attachment on Tooth Surface



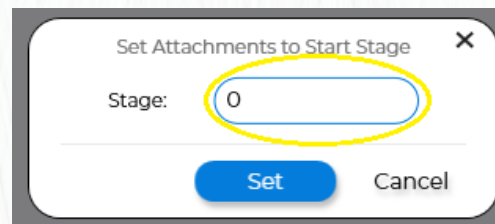
Rise Attachment From Tooth Surface



Note: To set the attachments on a particular aligner session **click**, to open attachment set on editor (Shown below).

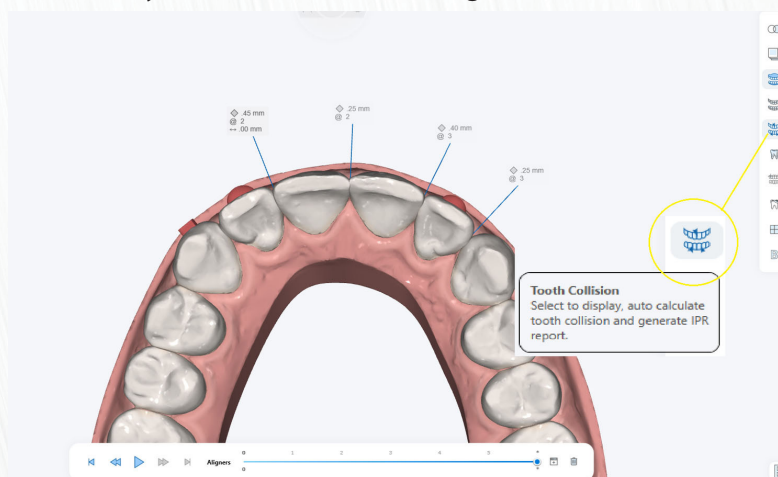


Edit the stage when the attachment is to appear for placement, by entering the preferred stage number on the editor (Shown below).



7. REVIEW IPR

To view the recommended IPR amount, move sequence to Post-Treatment or Last Aligner Stage. The amount, stage and left over spacing is automatically calculated on the last stage (Shown below).



Note: By default the tooth collision tool is active. Make sure to keep active while reviewing IPR.

EZ-Align®

www.ezalign.com

NEED FURTHER
ASSISTANCE?

Email: ez@dynaflex.com
Call: 800-489-4020