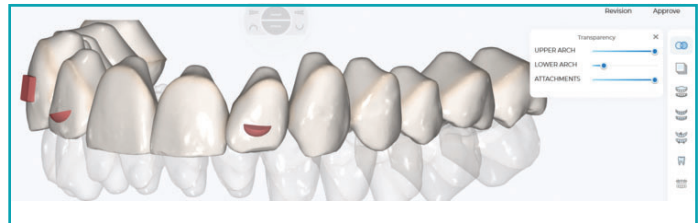


1. ARCH SELECTION AND TRANSPARENCY TOOL

Slide Upper Arch bar to desired transparency state.
(See below).



Slide Lower Arch bar to desired transparency state.
(See below).

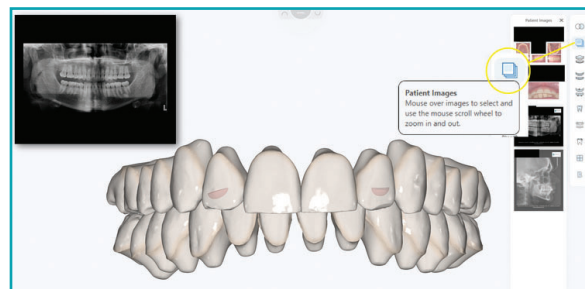


Slide Attachment bar to desired transparency state. **Note:** Slide all the way to the left for 100% transparency (See below).



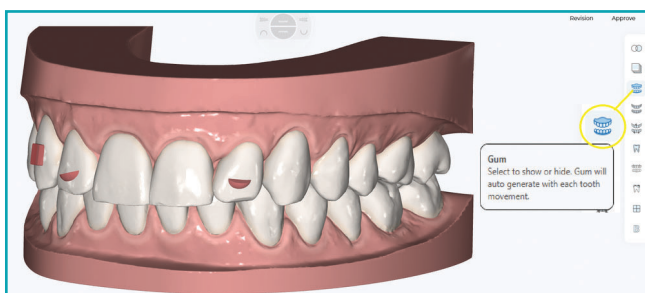
2. PATIENT IMAGES

Images loaded on the portal at time of order creation will automatically display in SmileShare™ software.
(See below).



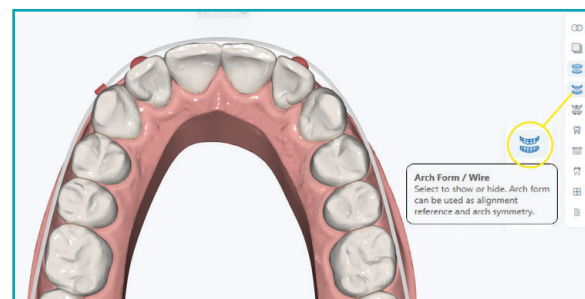
3. MODEL WITH BASE SELECTION

Select GUM tool to view model with base. **Note:** Base Morphing calculation will automatically take place the moment you select to show base (See below).



4. VIEW / HIDE ARCH FORM / WIRE

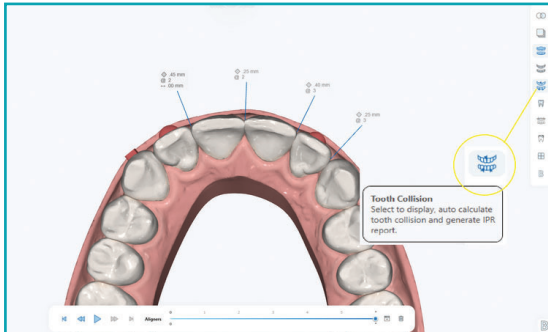
Select Arch Form tool to show arch form (See below).
Note: Arch Form can be modified with the arch modify tool.



5. VIEW / HIDE TOOTH COLLISION / IPR REPORT

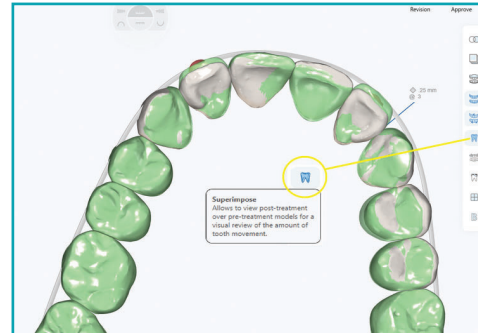
Select tooth collision tool to view or hide IPR report.

Note: By default, collision tool is active. Make sure to keep active when reviewing IPR report (*See below*).



6. HOW TO SUPERIMPOSE PRE-TREATMENT MODEL

Select Superimpose tool to view or hide pre-treatment model over post-treatment model (*See below*).

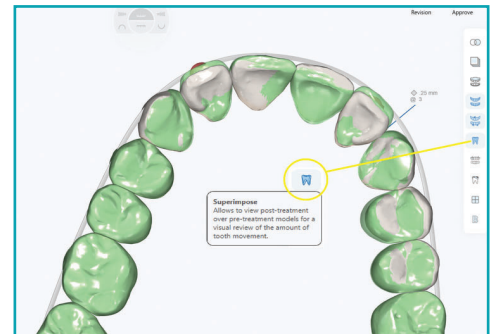


Note: Click play button or drag the pre to post slider bar to show the movement between the two models (*See below*).



7. ACTIVATE TOOTH SYMMETRY MODE

Select Tooth Symmetry tool to activate Tooth Symmetry Mode. Then, right click on a tooth and two planes will display at both the gingival margin and occlusal edge of selected tooth which allows you to view if the select tooth is leveled to the opposite quadrant tooth (*See right*). **Note:** Planes will travel as you move the teeth directly with the tooth manipulation tool or controlled tooth movement tools.



8. CALCULATE OCCLUSOGRAM

Select Occlusogram tool to initiate the calculation of Occlusion contact points (*See right*). **Note:** Depth chart is measured in mm.

